

Participation rates

Prefitted area

9 sqm (3x3 m)	€ 2.800,00
18 sqm (6x3 m)	€ 4.800,00
27 sqm (9x3 m) - limited availability	€ 6.800,00
27 sqm (L-shaped)	€ 6.800,00
36 sqm (6x6 m)	€ 8.800,00

Raw area (not equipped)

(36 sqm minimum. Area to be set up with your own booth fitting company)
Cost € 190,00/sqm

Participation fee

Direct Exhibitor (charged for raw areas only) € 400,00
Co-Exhibitor € 250,00
Represented Company € 50,00

Cibus Tec Forum sponsorship (booking of a prefitted or raw exhibition area is required)

Sponsorship value € 10.000,00

What's included?

Prefitted and raw area

	Prefitted area					Raw area
	9 sqm	18 sqm	27 sqm (9x3 m)	27 sqm (L-shaped)	36 sqm	
Direct Exhibitor Participation Fee	✓	✓	✓	✓	✓	
Company Data in the Catalogue (online), Visitor's Guide and APP Cibus Tec Forum	✓	✓	✓	✓	✓	✓
Business Agenda activation to pre-arrange meetings with visitors and Top Buyers	✓	✓	✓	✓	✓	✓
Material to promote your presence at Cibus Tec Forum	✓	✓	✓	✓	✓	✓
Exhibitor badges	2	5	7	7	9	9
Car Clearances inside the Fairgrounds	1	1	1	1	1	1
Car Clearances outside the Fairgrounds	1	1	2	2	3	3

Additional badges/clearances will be available up to sell-out at the following rates:

- Exhibitor Badge: € 10,00 + VAT each (Exhibitor badges are valid from 8:30 am to 6:30 pm)
- Outside Car Clearance: € 20,00 + VAT each
- Inside Car Clearance: € 75,00 + VAT each

Co-Exhibitor and Represented Company participation fees

Co-Exhibitor

- Company Data in the Catalogue (online), Visitor's Guide and APP Cibus Tec Forum
- Business Agenda activation to pre-arrange meetings with visitors and Top Buyers
- Material to promote your presence at Cibus Tec Forum
- 1 Exhibitor badge
- 1 Car Clearance outside the Fairgrounds

Represented company

- Company Data in the Catalogue (online), Visitor's Guide and APP Cibus Tec Forum
- Business Agenda activation to pre-arrange meetings with visitors and Top Buyers

Cibus Tec Forum sponsorship

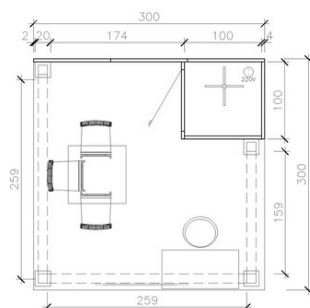
- Company logo on:
 - Event advertising page on trade magazines
 - Event website
 - Newsletters
 - Visitors invitations and tickets
 - Online catalogue and APP
 - Onsite promotional signage
 - Buyers Lounge
- Access to Buyers lounge
- Company lanyard at the entrances (lanyard supplied by the sponsor)
- Mention of the company in Cibus Tec Forum press releases
- Dedicated newsletter (50.000 Italian contacts and 20.000 foreign contacts)

Prefitted areas will be set up in coloured wooden panels (H 300 cm - white colour) delimitating the booth area, wooden bands 30 cm and carpet (grey charcoal colour) and grey charcoal columns (20x20 cm).

Options include:

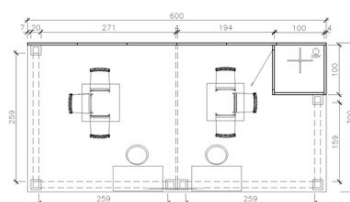
9 smq (3x3 m)

- 1 closet 1x1 meter with swing door
- 1 reception desk
- 1 stool bar
- 1 square table
- 3 chairs
- 1 hat-stand
- 1 basket
- lighting system
- 1 multi-socket
- 1 frame with the name of the Company



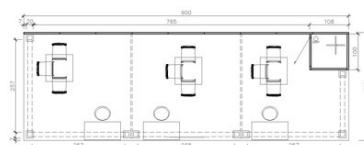
18 smq (6x3 m)

- 1 closet 1x1 meter with swing door
- 2 reception desks
- 2 stool bars
- 2 square tables
- 6 chairs
- 1 hat-stand
- 1 basket
- lighting system
- 1 multi-socket
- 1 frame with the name of the Company



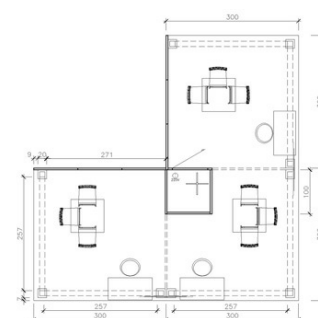
27 smq (9x3 m) - limited availability

- 1 closet 1x1 meter with swing door
- 3 reception desks
- 3 stool bars
- 3 square tables
- 9 chairs
- 1 hat-stand
- 1 basket
- lighting system
- 1 multi-socket
- 1 frame with the name of the Company



27 smq (L-shaped)

- 1 closet 1x1 meter with swing door
- 3 reception desks
- 3 stool bars
- 3 square tables
- 9 chairs
- 1 hat-stand
- 1 basket
- lighting system
- 1 multi-socket
- 2 frames with the name of the Company



36 smq (6x6 m)

- 1 closet 1x1 meter with swing door
- 3 reception desks
- 3 stool bars
- 3 square tables
- 9 chairs
- 1 hat-stand
- 1 basket
- lighting system
- 1 multi-socket
- 2 frames with the name of the Company

